

# HAMMER™ TLA Series

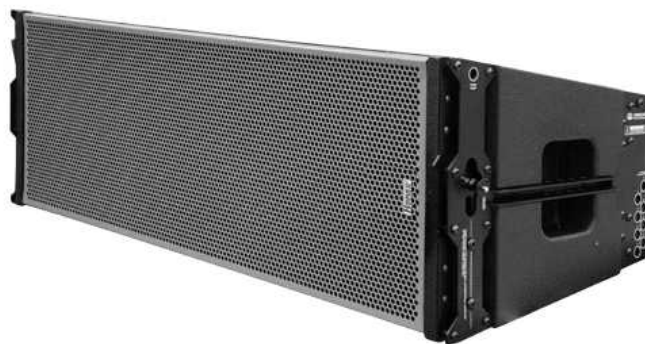
## TLA-12



## SPECIFICATIONS

<b>Model</b>	TLA-12 (Dual 12" 2way full range line source system)
<b>Power Handling</b>	800W RMS / 1600W Program
<b>Frequency response</b>	43~19KHz
<b>Average Sensitivity</b>	113dB
<b>Max SPL</b>	148dB (1box)
<b>Nominal Impedance</b>	8Ω
<b>Nominal Directivity(-6dB)</b>	110°(H) x 5°(V) above 750Hz
<b>Low Frequency Driver</b>	Custom made 2x12" Beyma driver / Neodymium magnet, 4" Titanium Voice coil
<b>High Frequency Driver</b>	Custom made 2x3" Beyma driver / Neodymium magnet, 3" Titanium Voice coil
<b>Flying Hardware</b>	Integrated Rigging
<b>Connectors</b>	2x NEUTRIK Speakon® NL4MP (1+/1-)
<b>Cabinet</b>	CNC made with tongue and groove assembly 18&25mm birch plywood
<b>Finish</b>	Touring grade textured black mat rubberized coating
<b>Dimensions</b>	975 x 360 x 460mm
<b>Weight</b>	46kg net, 52kg gross

## Images



## Detail

TLA is specially designed for large scale concert halls. They feature perfect low-pitched sound playing from 4" (100mm) Neodymium driver and powerful magnet. In particular, the low-pitched unit designed by our own special coating remains intact without any transformation over time, and it is designed to have the excellent performance in spite of an amplifier's degradation. In addition, its 3" titanium-compressed driver applied in medium and upper range and network design superiorly play sounds in order for audiences to be able to be fascinated by acoustic performance surrounded by plentiful low-pitched sounds and natural and clear performance. Also, an enclosure designed with specially-bonded plywood doesn't generate unnecessary resonance around speakers. The TLA series is designed to be one with the TLA-181 Sub-Woofer.